



WELCOME to Bosque Escola Avelãs





Bosque Escola Avelãs is a community project founded in 2017 by families in the community and managed by Descalças - Cooperativa Cultural - and the families that participate in it.

In this document, we share important and practical information about our management and day-to-day activities for those who want to know us better!

# The project & the children

BEA is a forest school which includes:

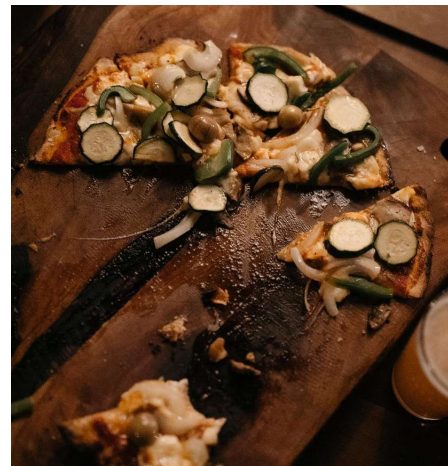
- o a kindergarten for children between 2 and 6 years old, based in nature.
- o an educational project for school-age children (from 6 to 12 years old), whose objective is to support home schooling families in the region who wish to educate their children in nature.

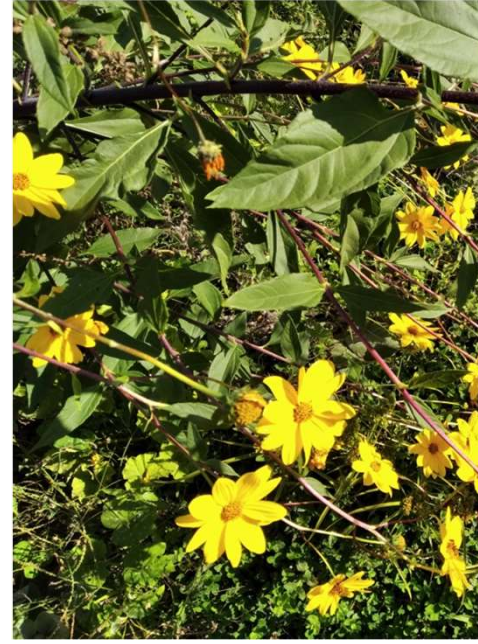
The children who attend are from different countries which encourages a richness in multiculturalism and multilingualism. At Bosque Escola Avelãs we speak Portuguese, Spanish, English, French and German every day.



# Community

As a group of families deeply involved in the local community, we participate in various local/regional projects, for example a community pizzeria (Oficina Pirata), a community market (Sábado Vivo), and a community garden. Among families, we have a wide variety of knowledge and services, such as: baking, seamster, carpentry, bulk grocery, beekeeping, Portuguese as a foreign language lessons, arts and shows, among many others...





## Descalças Cooperativa Cultural

BEA has the legal support of Descalças Cultural Cooperative. The social object of the Cooperative is for artistic creation, production, dissemination and cultural training, mainly in the musical and theatrical fields. The Cooperative aims at cooperation for development and social and solidary intervention through the arts.

It is through the Cooperative that BEA hires workers, applies for funding, and establishes partnerships with other institutions.





## Where are we?

On an 8ha farm, donated by the Marvão City Council to Cooperativa Descalças. It is a self-managed meeting space, without any institutional support which is maintained thanks to voluntary work and donations. The farm is an open space available for activities related to education, art and ecology. Projects such as Bosque Escola, Terra d'Amor Humor, a social canteen, community garden, and coworking as well as regular activities such as shows and workshops use the space daily.



## Meals

We have two meals at BEA: a mid-morning picnic around 10:30 am and lunch around 12:30 pm. Children bring the picnic (for mid-morning) in their backpacks. To cook lunch, we have the social canteen at Quinta das Avelãs, which prepares delicious ethical and vegetarian meals. Once a week, we cook with the kids over the fire!

For picnics, we recommend bringing fruit, nuts, vegetables, etc., as seasonal and ecological as possible!





# Methodologies

The education methodology is based on respect for the child's natural curiosity and the use of natural elements to learn. We combine nature, art and free play.



We follow an outdoor education model based on forest school pedagogy. In addition to the contents related to this approach, we also study the contents of the Portuguese curriculum with the school-age children group (6 to 12 years old). The study methodologies in our project are based on the relationship between educators, children and nature, seeking to promote and support children's active learning processes.





## Hiking & trips

Every month we walk a route through the territory where we inhabit, the Serra de São Mamede Natural Park.

In addition to exploring our mountains, we also make two trips a year. The winter trip, to the snow, and the summer camp!

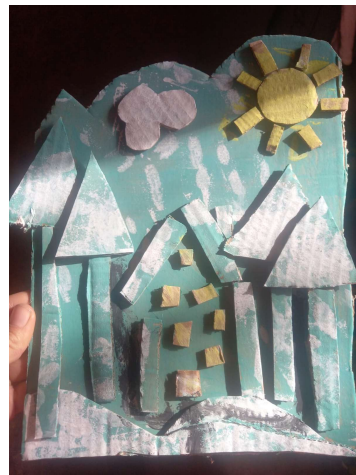


# Bosque Pirata

Every Friday, between 9 am and 3 pm, in Castelo de Vide, BEA, in partnership with the community project, Oficina Pirata, promotes handicraft workshops open to all children in the community between 5 and 12 years old.



This space has a carpentry workshop and a pottery workshop available to children. Here every Friday, the children, in addition to learning these two skills, develop many other handicraft projects, visit the village, museums, the market and participate in the community pizzeria.



For more information:

Email– [correiodobea@gmail.com](mailto:correiodobea@gmail.com)

Website – [www.bosque-escola-avelas.org](http://www.bosque-escola-avelas.org)

Facebook – [facebook.com/BosqueEscolaAvelas](https://facebook.com/BosqueEscolaAvelas)

Instagram - [bosque\\_escola\\_avelas](https://instagram.com/bosque_escola_avelas)

